

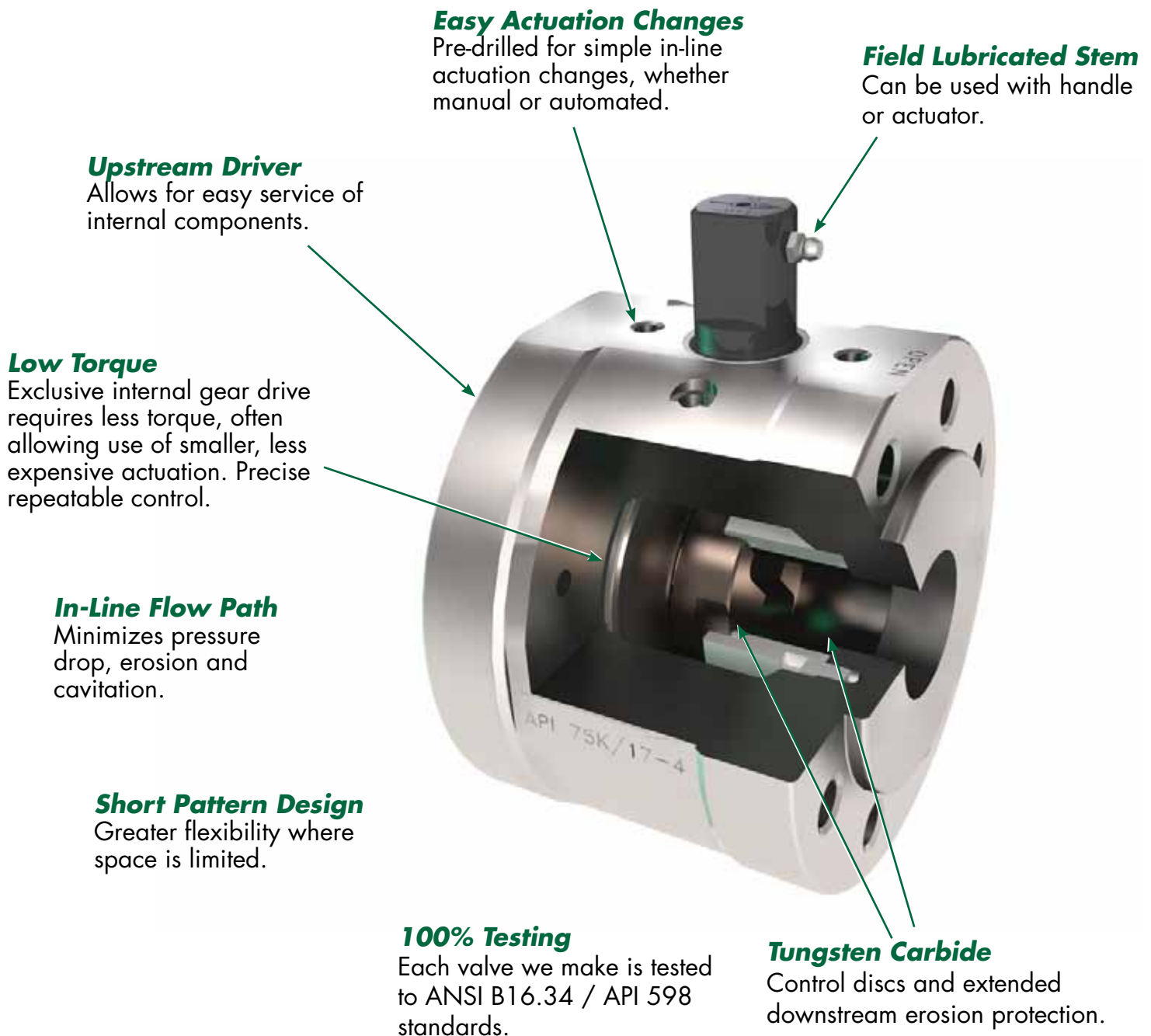


*High Performance  
Control & Choke Valves*

# FDA Series

## High Performance Control & Choke Valves

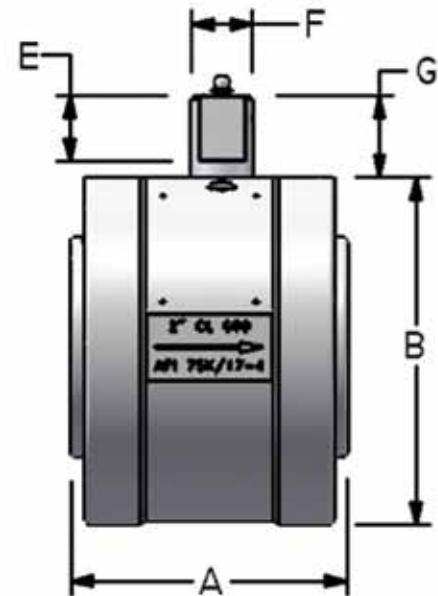
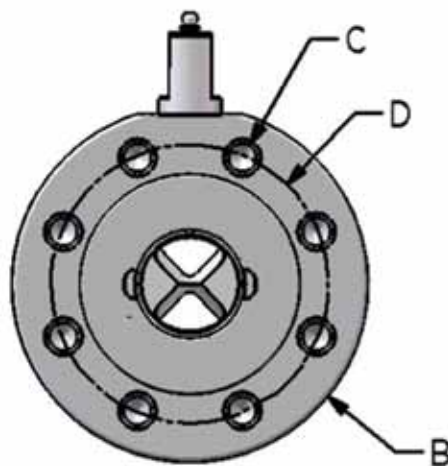
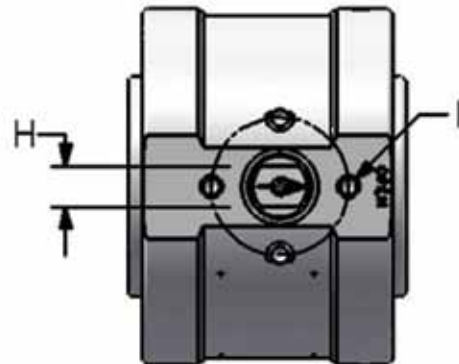
Like all Cyclonic valves, the FDA Series is built with the Cyclonic Design Difference. When you need to control a wide range of pressures and flow rates of gases or liquids, Cyclonic's superior design gives you accurate control and a long safe valve life.



# FDA Series

## Technical Specifications

- Machined from solid bar stock; no porosity, limitless possible lengths
- Pressure ratings up to 10,000 psi MOP
- Xylan™ coated 17-4 stainless steel stem and disc driver
- Standard materials of API 75K 4130 and 316SS, or customer-specified materials
- ANSI B16.34 and/or API 6A wall thickness and bolt loading
- Manual, electric, hydraulic or pneumatic actuation
- Open/close or modulating service
- Selectable failure position
- Raised Face and RTJ flanges available



Size Code	Press Code	Disc Type	Size (in)	Pressure Rating	Max Ori Size	A (in)	B (in)	C (in)	D (in)	E (in)	F (in)	G (in)	H (in)	I (in)
15	06	D2	1-1/2	CL 600	58/64	3.61	6.13	0.88	4.50	0.94	0.74	1.00	0.56	4 x .250-20 (1.75 BCD)
18	10	D6	1-13/16	10K MOP	91/64	6.73	7.88	0.88	5.75	1.20	1.12	1.50	0.75	4 x .375-16 (2.50 BCD)
20	06	D2	2	CL 600	58/64	5.00	6.50	0.75	5.00	1.20	1.12	1.50	0.75	4 x .375-16 (2.50 BCD)
20	06	D6	2	CL 600	91/64	5.00	6.50	0.75	5.00	1.20	1.12	1.50	0.75	4 x .375-16 (2.50 BCD)
20	15	D2	2	CL 1500	58/64	5.00	8.50	1.00	6.50	1.11	1.12	1.50	0.75	4 x .375-16 (2.50 BCD)
20	15	D6	2	CL 1500	91/64	5.00	8.50	1.00	6.50	1.11	1.12	1.50	0.75	4 x .375-16 (2.50 BCD)
20	62	D2	2	6250 MOP	58/64	4.90	6.25	0.88	4.94	0.94	0.74	1.14	0.56	4 x .375-16 (2.00 BCD)
21	10	D6	2-1/16	10K MOP	91/64	6.73	7.88	0.88	6.25	1.20	1.12	1.50	0.75	4 x .375-16 (2.50 BCD)
29	50	D9	2-9/16	5K MOP	120/64	6.19	9.62	1.00	7.25	1.20	1.12	1.44	0.75	4 x .375-16 (2.50 BCD)
30	06	D6	3	CL 600	91/64	5.00	8.25	0.88	6.62	1.27	1.12	1.50	0.75	4 x .375-16 (2.50 BCD)
30	06	D9	3	CL 600	120/64	5.75	8.25	0.88	6.62	1.20	1.12	1.50	0.75	4 x .375-16 (2.50 BCD)
30	15	D6	3	CL 1500	91/64	6.00	10.50	1.25	8.00	1.20	1.12	1.50	0.75	4 x .375-16 (2.50 BCD)
30	25	D9	3	CL 2500	120/64	6.06	12.00	1.38	9.00	1.20	1.12	1.40	0.75	4 x .375-16 (2.50 BCD)
30	09	D2	3	CL 900	58/64	5.00	9.50	1.00	7.50	1.20	1.12	1.50	0.75	4 x .375-16 (2.50 BCD)
30	09	D6	3	CL 900	91/64	5.00	9.50	1.00	7.50	1.20	1.12	1.50	0.75	4 x .375-16 (2.50 BCD)
31	10	D9	3-1/16	10K MOP	120/64	7.40	10.62	1.12	8.50	1.20	1.12	1.50	0.75	4 x .375-16 (2.50 BCD)
40	06	D6	4	CL 600	91/64	5.60	10.75	1.00	8.50	1.20	1.12	1.50	0.75	4 x .375-16 (2.50 BCD)
40	06	D9	4	CL 600	120/64	5.60	10.75	1.00	8.50	1.20	1.12	1.50	0.75	4 x .375-16 (2.50 BCD)
40	09	D6	4	CL 900	91/64	6.06	11.50	1.25	9.25	1.20	1.12	1.30	0.75	4 x .375-16 (2.50 BCD)
40	09	D9	4	CL 900	120/64	6.06	11.50	1.25	9.25	1.20	1.12	1.30	0.75	4 x .375-16 (2.50 BCD)
40	15	D6	4	CL 1500	91/64	6.06	12.25	1.38	9.50	1.20	1.12	1.50	0.75	4 x .375-16 (2.50 BCD)
40	15	D9	4	CL 1500	120/64	6.10	12.25	1.38	9.50	1.20	1.12	1.50	0.75	4 x .375-16 (2.50 BCD)

In order to consistently offer you the highest quality, fully engineered products, we reserve the right to change our specifications and designs at any time. Cyclonic Valve products and the Cyclonic logo are registered and/or common law trademarks of Cyclonic Valve Company, Inc. This document, including textual matter and illustrations, is copyright protected by Cyclonic Valve Company, Inc., with all rights reserved ©2011 Cyclonic Valve Company.

***Cyclonic valves are more than just valves.  
They're SOLUTIONS!***



*Cyclonic Valve Headquarters in Tulsa, OK*

***Since 1991, Cyclonic has been setting the standards for precise and repeatable control of gases and liquids. We listen to our customers, and then design and manufacture valves to meet and exceed their expectations.***

#### **HOW DO WE DO THAT?**

Cyclonic's in-house manufacturing capability means superior quality control, unmatched customer service, and shorter lead times.

Our valves are machined from solid bar stock, in API 75K 4130 or 316 stainless steel. Cyclonic's tungsten carbide wear components and proprietary designs provide Class VI shutoff, low torque operation, and accurate flow control.

Our exclusive **"Side Entry"** design allows simple one-man complete in-line inspection and maintenance, critical for increasing safety and protecting the environment.

Our **"EDS™ Erosion Detection System"** can prevent fluids or gases from escaping into the environment by providing early warning before an incident happens.

#### **WHO USES CYCLONIC VALVES?**

- Anadarko
- BP
- Baker Hughes/Centrilift
- Chesapeake
- Chevron
- ConocoPhillips
- Denbury
- Devon
- Marathon Oil
- Newfield
- QEP
- Quicksilver
- Schlumberger/Reda
- Many others

#### **HOW ARE THEY USED?**

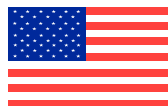
Cyclonic valves are used for automated and manual production chokes, plunger lift control, high pressure control of CO<sub>2</sub>, water, and steam injection, as by-pass valves, blow-off/bleed-down valves, at OEM pump testing and repair facilities, as compressor suction/by-pass/discharge valves, and in many other applications.

Most common line sizes 1" - 6" are readily available, in pressure ratings up to 10,000 psi. End connections include API and ANSI flanges, NPT, BW, SW, Victaulic®, wafer style or other customer specified connections.

***It all comes down to this...***

***The Cyclonic difference***

***Exceeding your expectations every day.***



All Cyclonic Valves are proudly made in the USA.

*Imagine the possibilities...*



**Cyclonic Valve Company, Inc.**

2349 West Vancouver  
Broken Arrow, OK 74012-1183  
918-317-8200 or 1-800-922-1707  
FAX 918-317-8206  
EMAIL SALES@cyclonic.com